

ONCE-IN-A-LIFETIME PROPERTY AVAILABLE



This just might be the property where you stop working and start living.

The **R**eserve
AT LAKE GUNTERSVILLE



P. LAWLER
ENTERPRISES, LTD.

300 ACRES OF LAKEFRONT PROPERTY.
2,900 FEET OF SHORELINE.
69,000 ACRES OF FRESHWATER LAKE.

The only thing bigger than these numbers is the home you're dreaming about.

PROPERTY DESCRIPTION

Located in Marshall County on Sunny Brook Farm Road, approx 2.2 miles west of U.S. Highway 431 (35 miles south of Huntsville, Alabama)

300 acres +/- ranging from lakeside to mountaintop, with several distinct tiers ideal for homesites and other facilities

Approximately 2,900 linear feet of shoreline on Lake Guntersville

Elevation ranges from 595' (lake level) to 1,100'

Adjacent to Conners Island Business Park, a unique property under development by the City of Guntersville

Historically significant location – Native Americans called this spot home going back thousands of years.

Centrally located to major metro areas, including Nashville, Atlanta and Birmingham

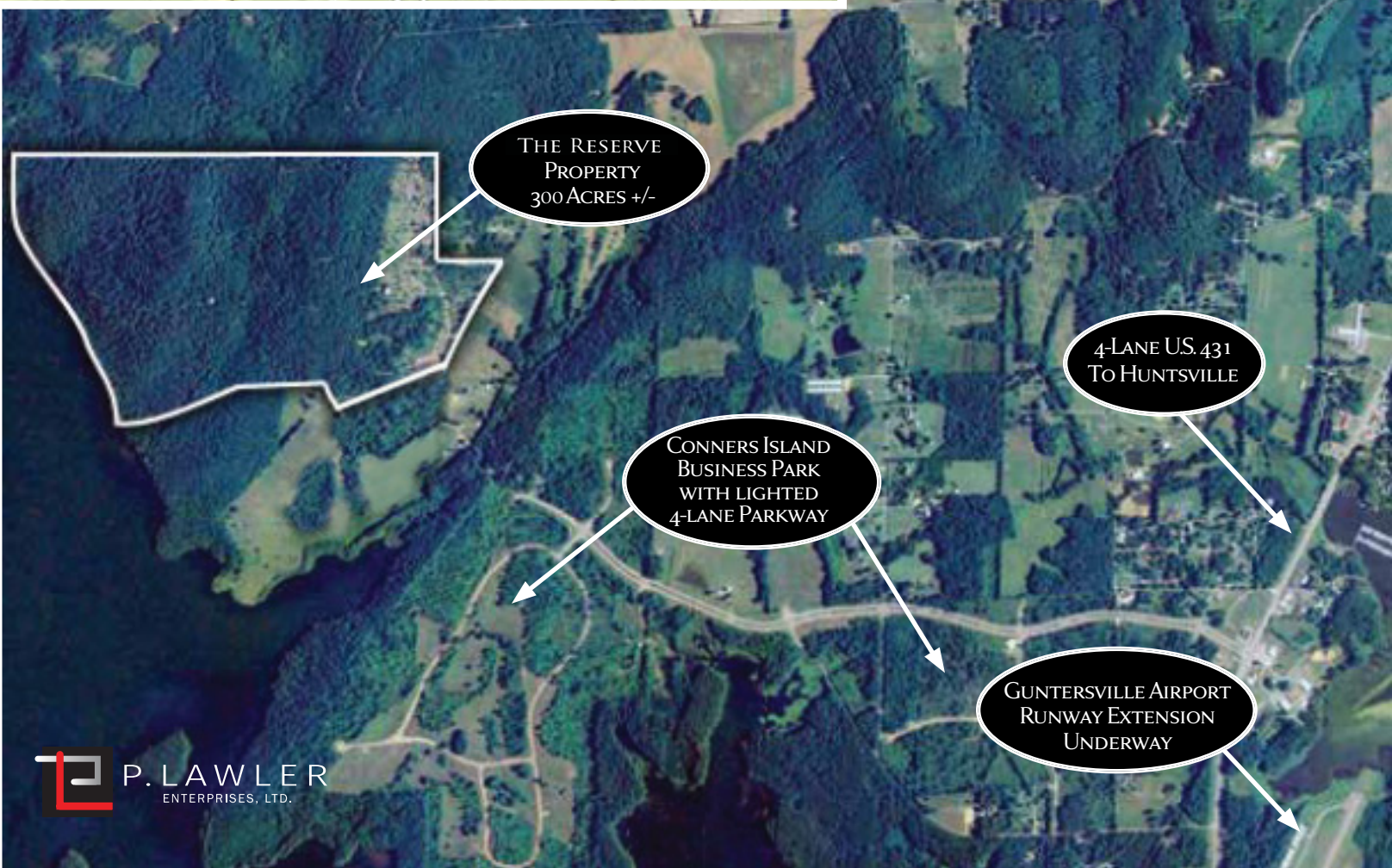
Convenient access to Huntsville, Alabama, just 30 minutes via excellent 4-lane highway

Less than 3 miles to Guntersville Municipal Airport, with a federally-funded 5,000-foot runway extension project currently underway





The Reserve
AT LAKE GUNTERSVILLE



The **R**eserve
AT LAKE GUNTERSVILLE



BUILDING YOUR DREAM HOME
STARTS WITH THE PERFECT LOT.



P. LAWLER
ENTERPRISES, LTD.

*Graced with a natural beauty that
includes both hardwoods and evergreens,
The Reserve offers a rare opportunity
to build the home of your dreams.*



P. LAWLER
ENTERPRISES, LTD.

Your chance of a lifetime.

Build your Lake Guntersville dream house at The Reserve, under development near Connors Island. Choose now from dramatic water front, water access and water view lots priced from \$125,000 to \$500,000.



The **R**eserve AT LAKE GUNTERSVILLE



For more information:
Patrick Lawler, 972-839-3192

Coming soon:
www.thereserveatlakeguntersville.com

